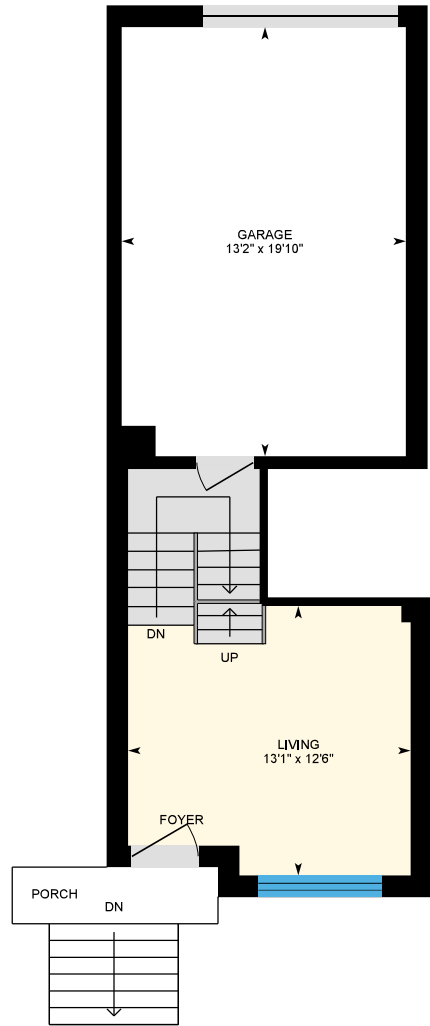
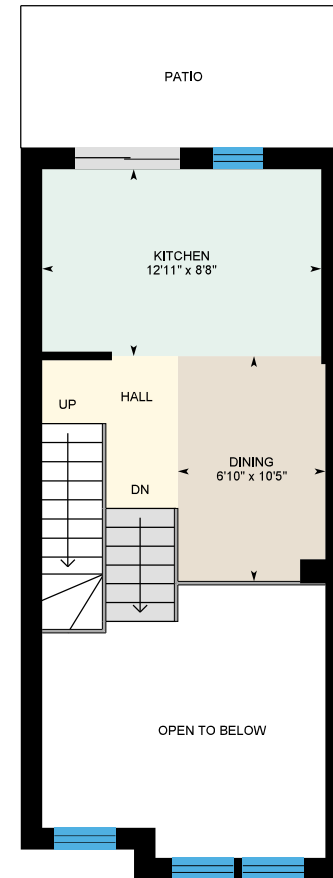


254 Berkeley St, Toronto, ON

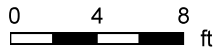
Main Building: Total Exterior Area Above Grade 1097 sq ft



Main Floor
Exterior Area 261 sq ft



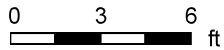
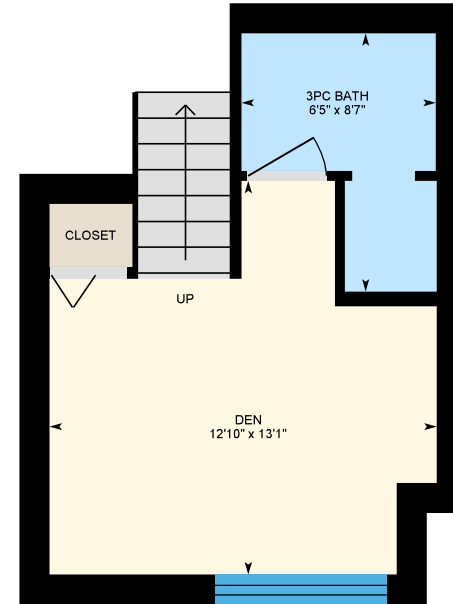
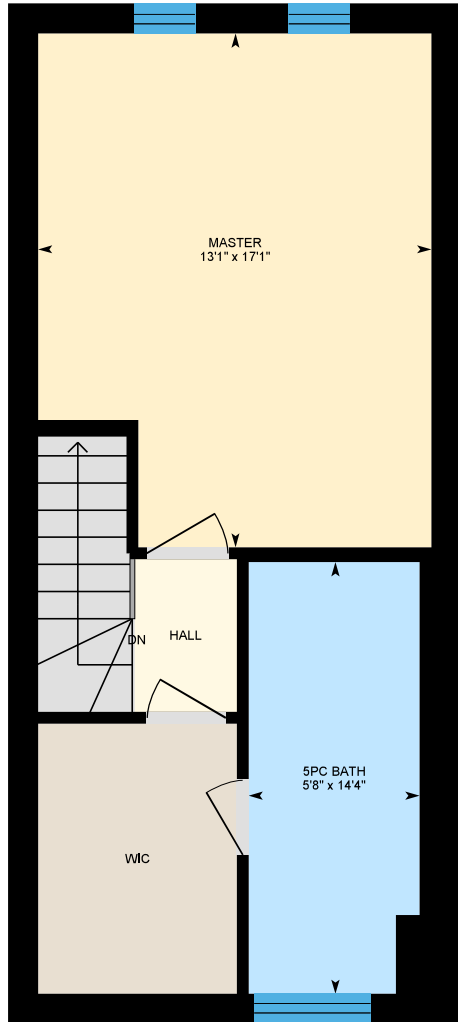
2nd Floor
Exterior Area 333 sq ft



PREPARED: Jun, 2020

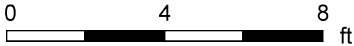
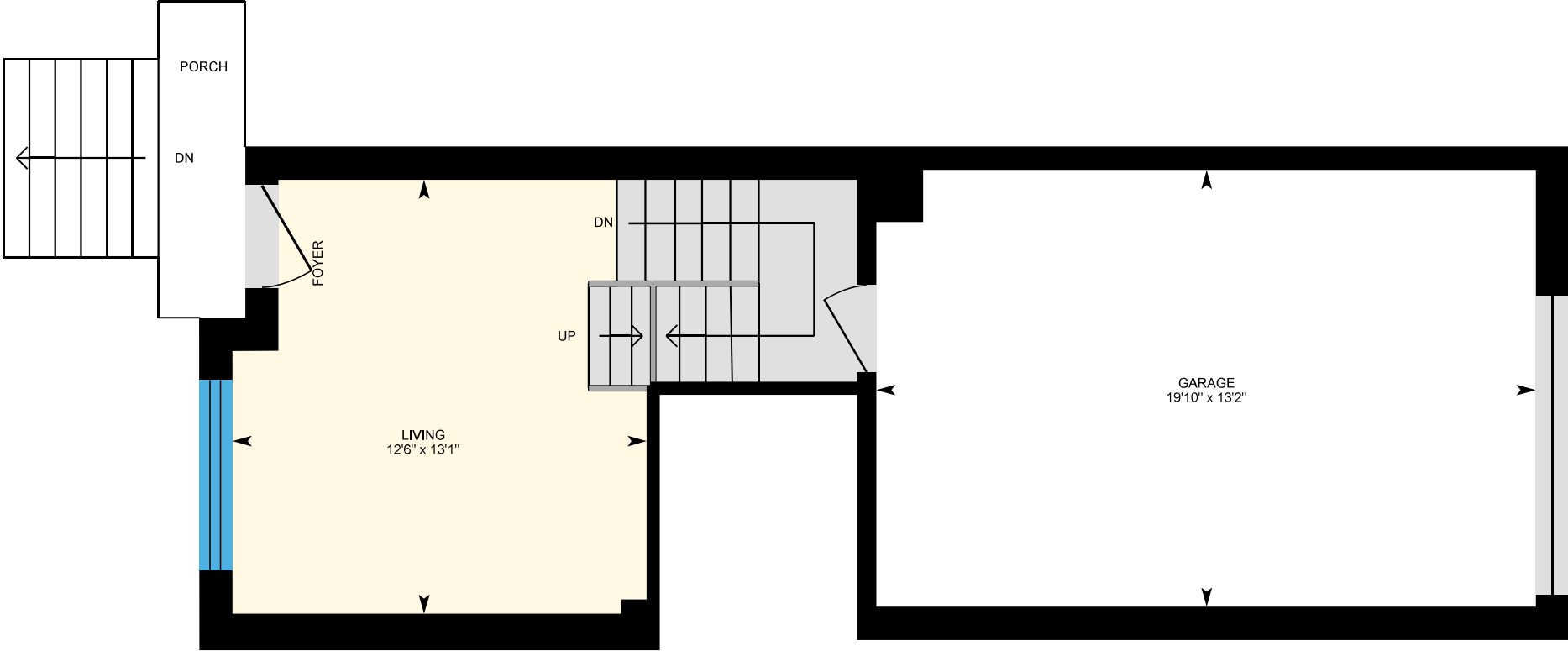
254 Berkeley St, Toronto, ON

Main Building: Total Exterior Area Above Grade 1097 sq ft



254 Berkeley St, Toronto, ON

Main Floor Total Exterior Area 261 sq ft
Total Interior Area 194 sq ft



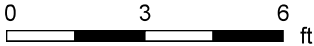
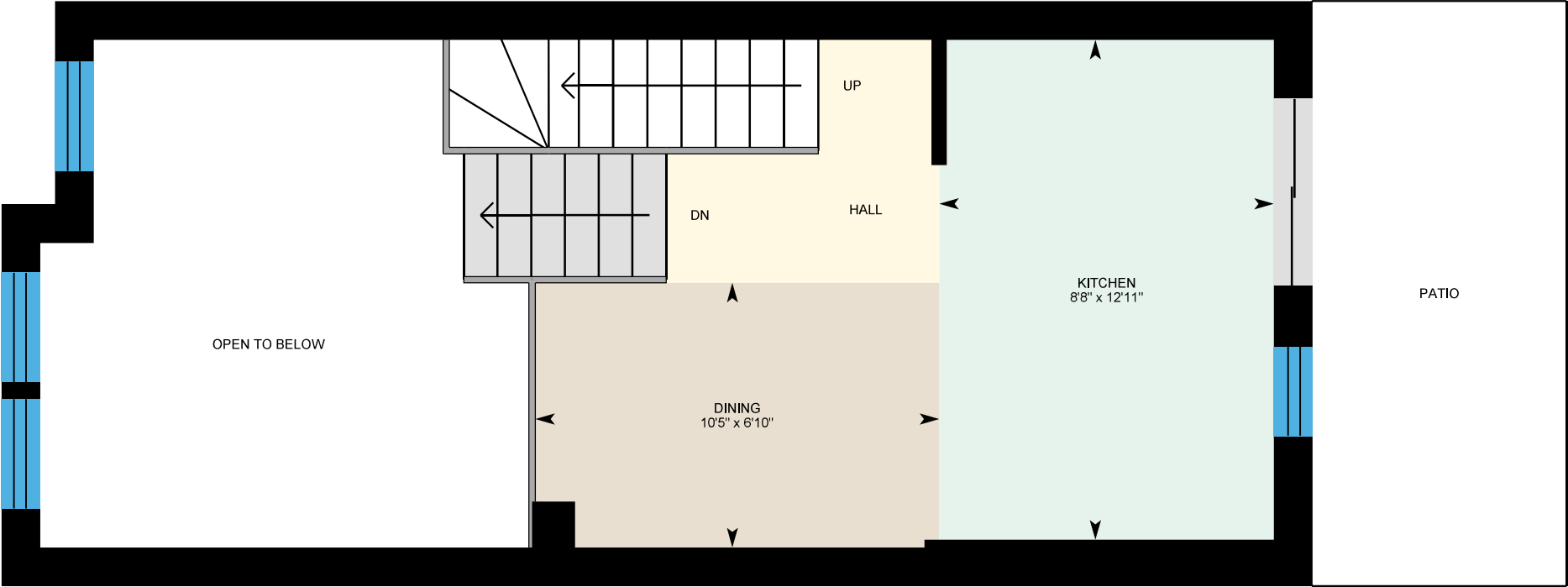
PREPARED: Jun, 2020



White regions are excluded from total floor area. All room dimensions and floor areas must be considered approximate and are subject to independent verification. For method of measurement please see <https://youriguide.com/measure/>.

254 Berkeley St, Toronto, ON

2nd Floor Total Exterior Area 333 sq ft
Total Interior Area 233 sq ft



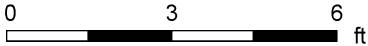
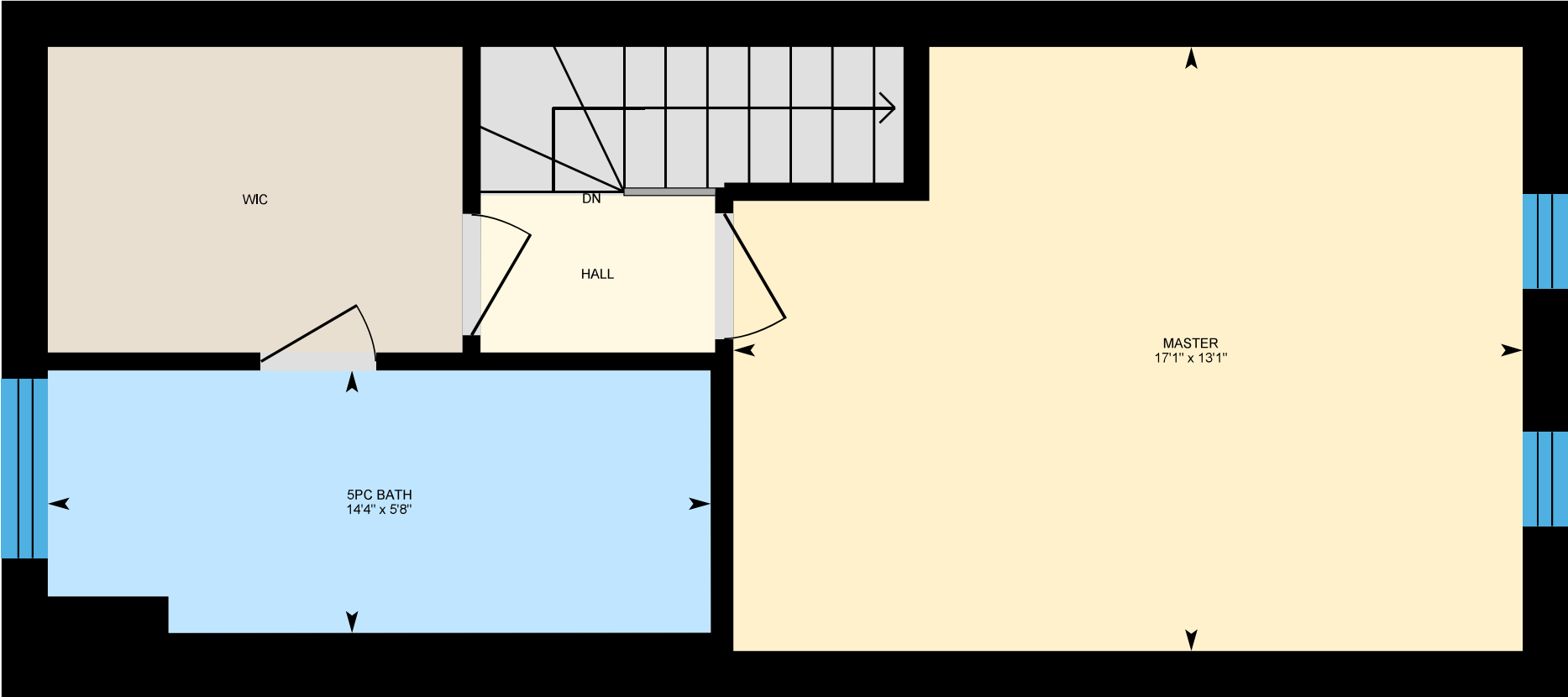
PREPARED: Jun, 2020



White regions are excluded from total floor area. All room dimensions and floor areas must be considered approximate and are subject to independent verification. For method of measurement please see <https://youriguide.com/measure/>.

254 Berkeley St, Toronto, ON

3rd Floor Total Exterior Area 503 sq ft
Total Interior Area 409 sq ft



PREPARED: Jun, 2020

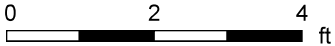
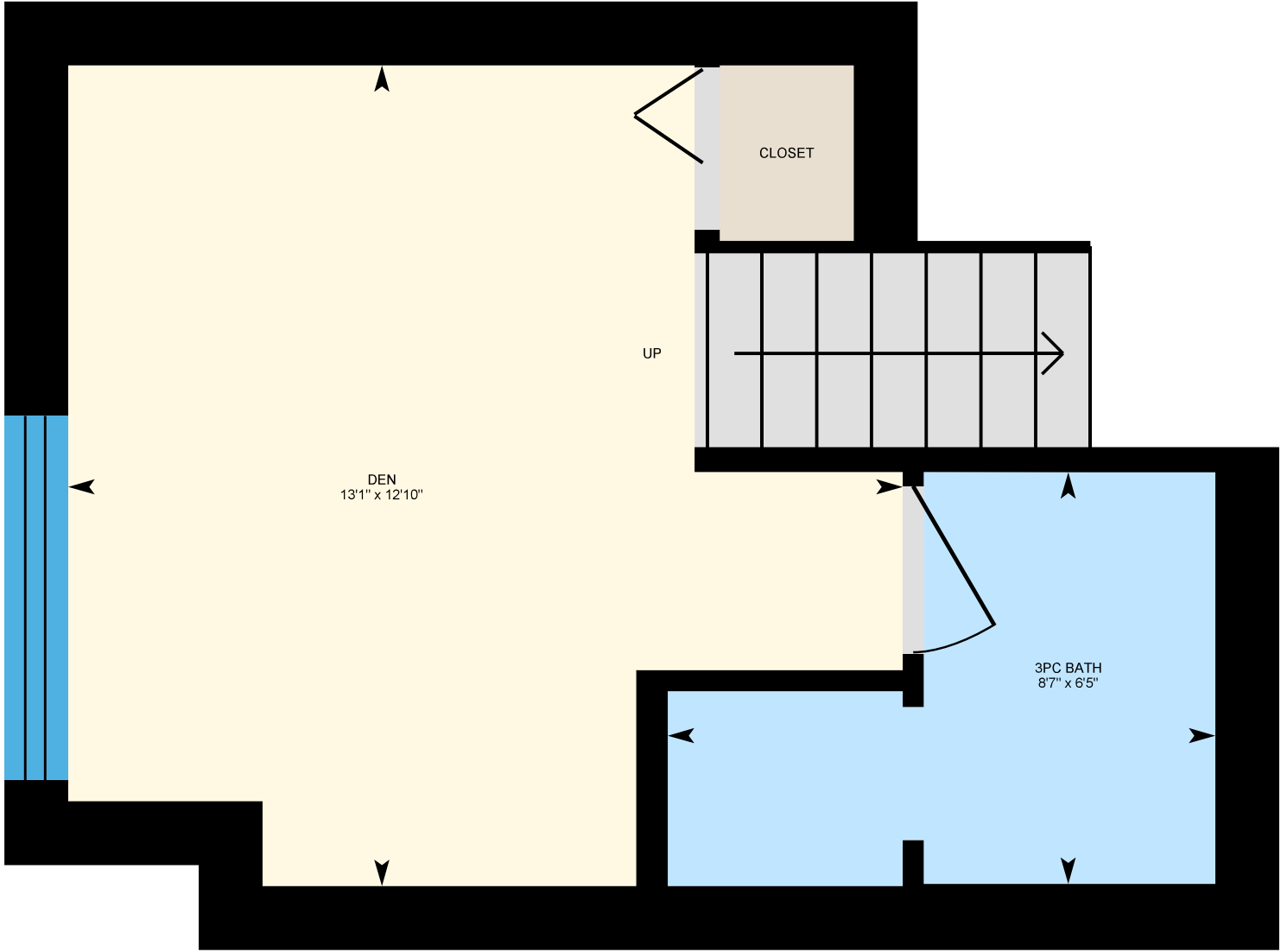


White regions are excluded from total floor area. All room dimensions and floor areas must be considered approximate and are subject to independent verification. For method of measurement please see <https://youriguide.com/measure/>.



254 Berkeley St, Toronto, ON

Basement Total Exterior Area 269 sq ft
Total Interior Area 204 sq ft



PREPARED: Jun, 2020



White regions are excluded from total floor area. All room dimensions and floor areas must be considered approximate and are subject to independent verification. For method of measurement please see <https://youriguide.com/measure/>.